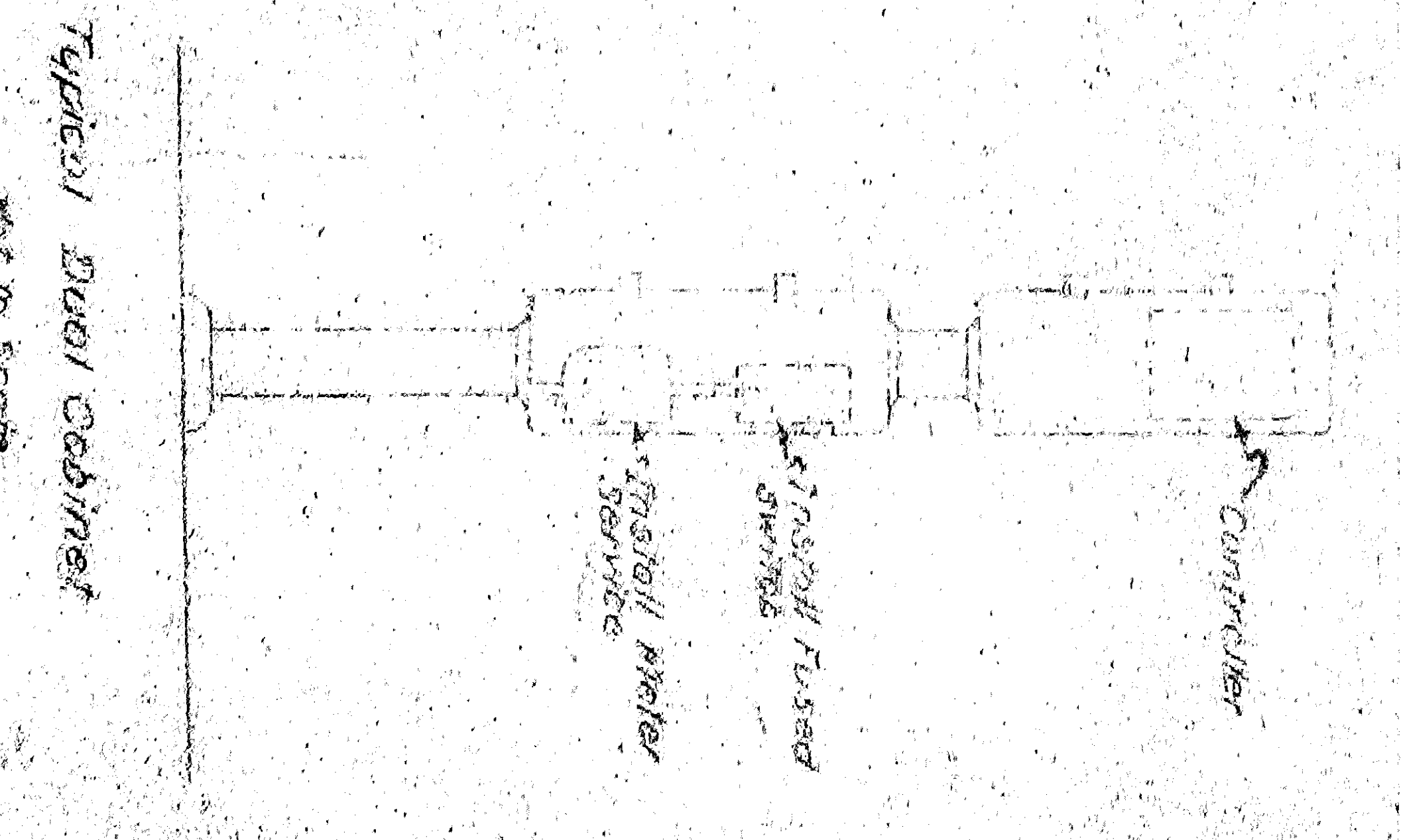
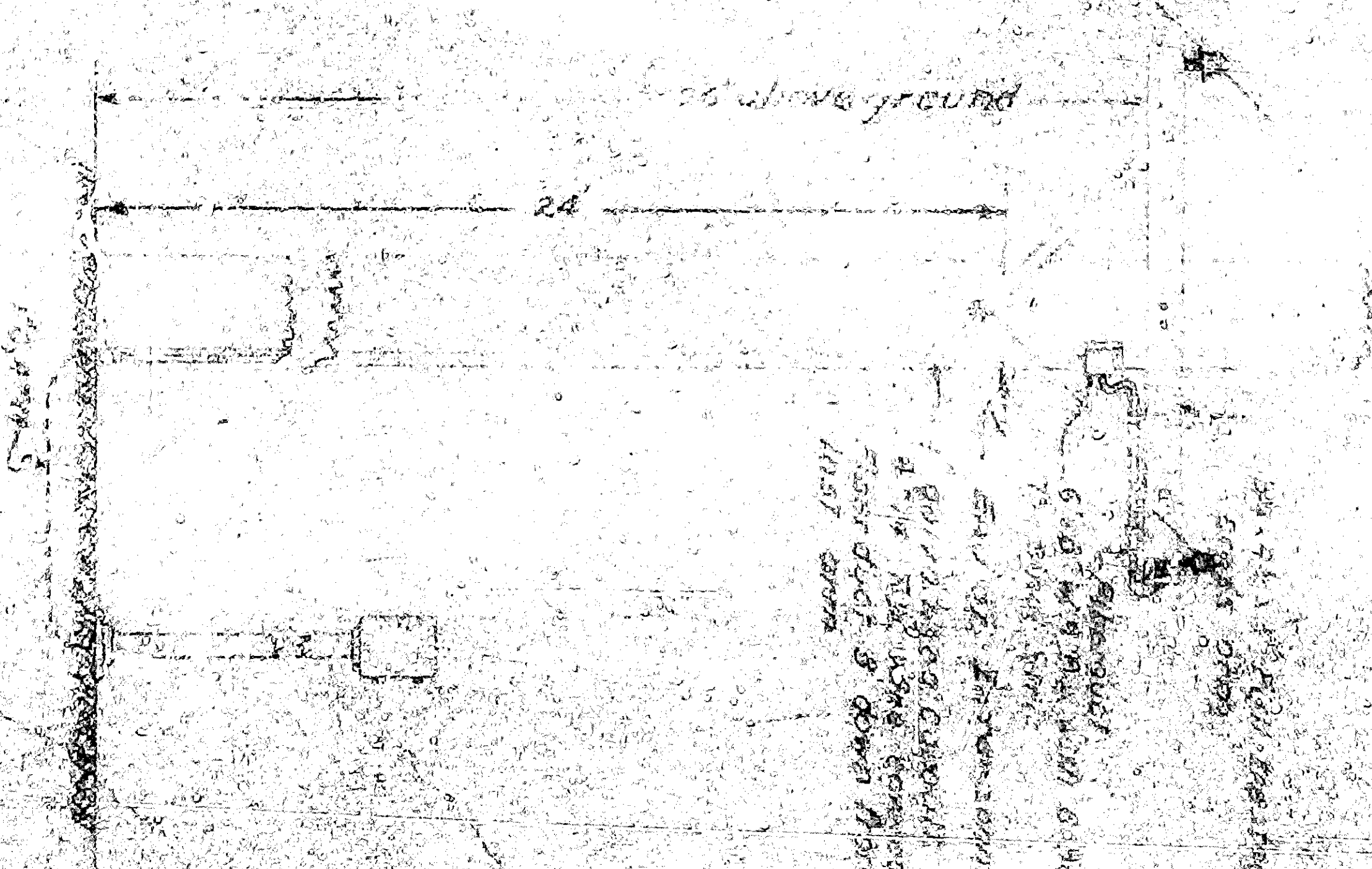


- AGREES:
1. STANDARD SHALL BE USED UNLESS OTHERWISE SPECIFIED HEREIN.
 2. SEE PLAN FOR TYPE OF SIGNAL, DIMENSIONS.
 3. TOP OF SIGNAL SHALL BE 34.5' TO 35.0'.
 4. AND 32.5' TO 33.0' FOR STANDARD SIGNAL SET 25000 TOWARD TRAFFIC INDICATED.
 5. ONE ANCHOR SHALL BE PROVIDED TO CONDUIT.
- SIGNAL STANDARDS**
NO SCALE



INTERCONNECT DETAILS



DEVELOPMENT AGENCY OF THE CITY OF SAN BERNARDINO MEADOWBROOK PROJECT AREA NO CALF 11-10 DESIGNED BY P.C. K. Ltd.	DEPARTMENT OF ENGINEERING CITY OF SAN BERNARDINO TRAFFIC SIGNALS LIGHTING	DRAWN BY G. B. Smith	CHECKED BY [Signature]
	DATE 0875		